

**VIKING VOICE: October 22, 2025**

St. Philip Neri Catholic School <richardhill@stphilipnerschool.ccsend.com>  
Reply-To: rhill@stphilipneri.org  
To: rhill@stphilipneri.org

Wed, Oct 22, 2025 at 11:39 AM

# The Viking Voice



[School Website](#)

[School Facebook](#)

[Parish Website](#)

[Parish Bulletin](#)

[Clarion Herald](#)

October 15, 2025 | Vol. 7, Issue 10



## UPCOMING EVENTS

|    |          |           |  |
|----|----------|-----------|--|
| 22 | OCT, WED | ● All day | Play Tech Week in PC (Day 3/4)             |
|    |          | ● All day | Faculty Meeting at "4PM"                   |
|    |          | ● All day | School Mass at "9AM"                       |
| 23 | OCT, THU | ● All day | Play Tech Week in PC (Day 4/4)             |
|    |          | ● All day | 50s Dress Down for 50th Day of School      |
| 24 | OCT, FRI | ● All day | Fall Pep Rally at "2:30PM"                 |
|    |          | ● All day | Fall Play at "7:30PM"                      |
| 25 | OCT, SAT | ● All day | Fall Play at "7:30PM"                      |
| 26 | OCT, SUN | ● All day | Fall Play at "2PM"                         |
|    |          | ● All day | Family Mass at "9AM"                       |
| 28 | OCT, TUE | ● All day | Student picture retakes                    |
| 29 | OCT, WED | ● All day | No school Mass                             |
| 30 | OCT, THU | ● All day | Halloween DDD                              |
| 31 | OCT, FRI | ● All day | School Mass at "9AM" (All Saints)          |
| 1  | NOV, SAT | ● All day | First Saturday Devotion                    |
| 2  | NOV, SUN | ● All day | Memorial Mass at "6PM"                     |
| 3  | NOV, MON | ● All day | National Vocation Awareness Week (Day 1/5) |
| 4  | NOV, TUE | ● All day | National Vocation Awareness Week (Day 2/5) |
| 5  | NOV, WED | ● All day | National Vocation Awareness Week (Day 3/5) |
|    |          | ● All day | School Mass at "9AM" (K begins to attend)  |




## **First Quarter Honor Rolls**

First Quarter Honor Rolls have been posted. Use the link below to view.


Congratulations to all the students who placed on honor rolls last quarter!

[\*\*First Quarter Honor Rolls\*\*](#)


---



**TRUNK OR TREAT  
CANDY DONATION  
DRESS DOWN DAY  
MONDAY, OCTOBER 27**



Any student who donated  
candy for Trunk or Treat may  
dress down in a Halloween shirt  
(or shirt in Halloween colors)  
along with PE shorts or  
sweatpants or regular school  
bottoms and socks and tennis  
shoes of the student's  
choosing.





**HALLOWEEN  
DRESS  
DOWN  
10/30**

**STUDENTS MAY WEAR COSTUMES TO SCHOOL ON THURSDAY, OCTOBER 30, WITH THE FOLLOWING GUIDELINES:**

- **NO MASKS AND NO WEAPONS.**
- **NO INFLATABLE COSTUMES.**
- **NO BLOOD OR GORE.**
- **NO VISUALS, SYMBOLS, OR WORDS THAT VIOLATE THE TEACHINGS OF THE CATHOLIC CHURCH.**
- **NOTHING TOO "SCARY" AS WE HAVE STUDENTS OF A YOUNG AGE ON OUR CAMPUS.**
- **NOTHING THAT WILL MAKE IT DIFFICULT FOR THE STUDENT TO FULLY PARTICIPATE IN THE ACADEMIC DAY.**
- **THE SCHOOL RESERVES THE RIGHT TO MAKE FINAL DECISIONS REGARDING THE APPROPRIATENESS OF A STUDENT'S COSTUME. STUDENTS WHO WEAR COSTUMES DEEMED INAPPROPRIATE WILL HAVE TO CALL HOME TO HAVE A UNIFORM BROUGHT TO SCHOOL.**
- **AS A RULE OF THUMB, IF YOU ARE NOT SURE YOUR STUDENT'S COSTUME WILL BE APPROPRIATE FOR SCHOOL, IT PROBABLY ISN'T.**

**\*\*\*PARENTS OF STUDENTS IN PK3, PK4, AND KINDERGARTEN- PLEASE BE ON THE LOOKOUT FOR FURTHER INFORMATION FROM YOUR TEACHERS. THERE MAY BE ADDITIONAL GUIDELINES FOR THESE YOUNGER STUDENTS.\*\*\***



# ST. PHILIP NERI VIKING CHEERLEADERS

## *Christmas Poinsettia Fundraiser*

The holiday season is around the corner, and we are selling poinsettias to help with our upcoming cheer season. These vibrant blooms make perfect gifts and add a festive pop to your Christmas decor.

Size options:

6.5", 8", 10"  
POTS WITH COVER

FLORIST QUALITY  
RED POINSETTIAS

LOCALLY GROWN BY  
PERINO'S GARDEN CENTER.



**Pick up from the  
Parishoner's Center  
Monday 11/17**

**Time:  
5:00pm - 8:00pm**

**PRICES START AT \$11  
ORDERS DUE: FRIDAY, NOVEMBER 7TH**

**LINK TO ORDER:  
SPN - Purchase Poinsettia**

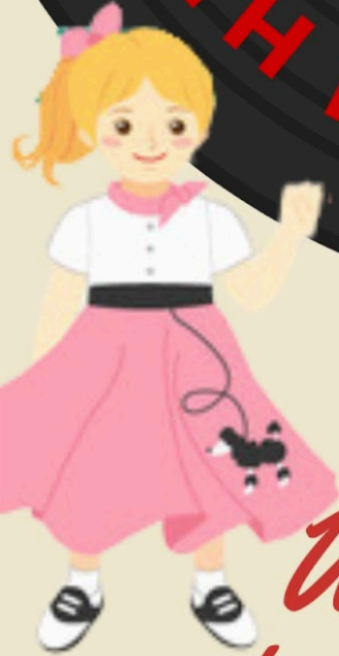
**Click here to order poinsettias**



## After-school Drama Classes

Registration is open for after-school drama classes! Classes are open to students in Kindergarten through 7th grade. Drama activities help students build confidence and develop a variety of skills, including focus, memory, cooperation, movement, and much more! Plus, it's fun! Check out the registration form for more information and to sign up!

[Click here for the registration form](#)

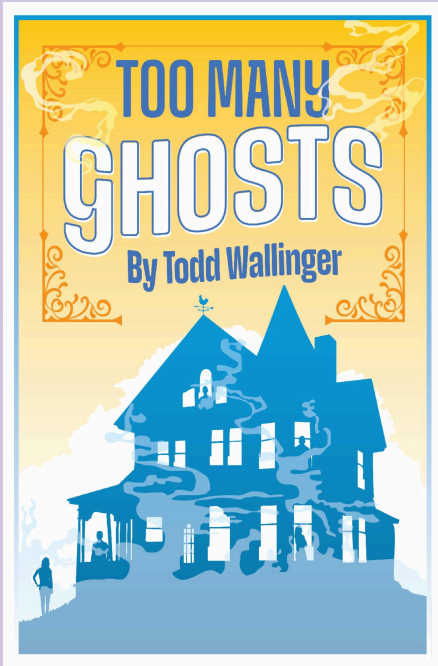


*We are going  
back to the 50's!*

**THURSDAY, OCTOBER 23, 2025**

Students will be allowed to wear their best 50's outfit. Please make sure the student's outfits meet dress down rules. No leggings allowed unless worn under shorts. Skirts must be of an appropriate length. Tennis shoes are allowed.

*We are Cruisin' through 2025!*



## **TOO MANY GHOSTS: OCT. 24 & 25**

The SPN Drama program will present its Halloween comedy, "Too Many Ghosts," by Todd Wallinger, on October 24th and 25th at 7:30 pm, and on October 26th at 2:00 pm. Performances will be in the Parishioner Center. Tickets will be available at the door and are \$8 for adults and \$5 for children.

Come out and support our talented students and enjoy a spooktacular show! Reserved seating is still available -- [use this link](#) -- but going fast!

ST. PHILIP NERI LADIES'  
COOPERATIVE CLUB  
IS PARTNERING WITH

# ACCESS PREGNANCY

DONATIONS WILL BE COLLECTED

FOLLOWING ALL MASSES  
THE WEEKEND OF

OCTOBER 25<sup>TH</sup> & 26<sup>TH</sup>

YOU CAN HELP US BUILD A BUNDLE OF HOPE FOR LOCAL FAMILIES IN NEED! WE ARE GRATEFULLY ACCEPTING DONATIONS OF ESSENTIAL SUPPLIES TO ENSURE EVERY BABY HAS A HEALTHY AND SAFE START. WE ARE COLLECTING DIAPERS, WIPES, AND SEALED FORMULA, AS WELL AS NEW AND GENTLY USED BABY ITEMS, WHICH INCLUDE CLOTHING, STROLLERS, ETC...



# JOIN OUR NEWEST CLUB

WE WELCOME ALL 6TH & 7TH GRADERS

**NEXT MEETING IS  
TUESDAY, OCTOBER 21, 2025  
BEFORE SCHOOL @ 7:15am**

FOOTPRINTS FOR *Life*



DIGNITY | COMPASSION | TRUTH





Dear parents,

Get ready! The Scholastic Book Fair is coming our way (YAY!). Choosing their own books empowers kids and inspires them to become Bolder, Prouder, and Stronger Readers. AND—as always—every book they buy earns rewards for our school.

Here's what you need to know about the Fair, which will take place from November 3rd-7th in the Library:

This year, say goodbye to cash and hello to **eWallet**—your child's digital payment account. Before the Fair, set up eWallet for worry-free, cash-free purchases. Anyone can contribute! Share each child's eWallet so friends and family can add funds and give your kids more books to enjoy.

Parents are welcome to shop the fair with their children during the classes scheduled date and time. *The schedule can be found on the back of this page.* **PK3 and PK4 students will visit the Book Fair only if accompanied by a parent or grandparent.**

If you can't make it to the Fair, then **shop at our school's Online Book Fair**. All orders ship directly to your home, and shipping is free for book orders over \$25. Your online orders will also benefit our school.

Visit our Book Fair homepage to learn more and get started with eWallet and online shopping:

<https://www.scholastic.com/bf/stphilipnerschool2>

Happy Reading!

Jennifer Allen

Librarian

## Book Fair Schedule

Monday  
Nov. 3rd

Tuesday  
Nov. 4th

Wednesday  
Nov. 5th

Thursday  
Nov. 6th

Friday  
Nov. 7th

---

|          |      |       |      |      |    |
|----------|------|-------|------|------|----|
| 9:00 AM  | PK3C |       | PK3A | PK3B |    |
| 9:30 AM  | PK4C | 1C    | PK4A | PK4B | KC |
| 10:05 AM | KB   | KA    | 2C   | 2B   | 2A |
|          |      |       |      |      |    |
| 12:55 PM | 1B   | 1A    | 5C   | 5B   | 5A |
|          |      |       |      |      |    |
| 1:45 PM  | 3B   | 3A/3C | 6C   | 6B   | 6A |
|          |      |       |      |      |    |
| 2:35 PM  | 4B   | 4A    | 4C   | 7B   | 7A |
|          |      |       |      |      |    |
|          |      |       |      |      |    |
|          |      |       |      |      |    |

---

# COMPLETING THE DREAM AND OPENING HEAVEN

Making Heaven  
visibly alive for  
our children!

COME JOIN US IN  
THIS MISSION!

AND THE WORD BECAME FLESH

SCAN FOR INFO  
[spnparish.net/dream](http://spnparish.net/dream)



[Click here to learn more and to contribute!](#)

---

## **CO-OP CORNER**

Join us for a



**St. Philip Neri  
Ladies' Cooperative Club**

**THE ONE WHERE WE GIVE THANKS**

**November 11th  
7 P.M.**

**Dinner and Drinks Provided**

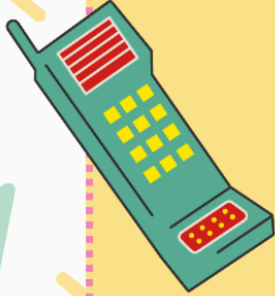
GUEST SPEAKER:

LISA D. GUNTER DNP

ACCESS PEDIATRICS

**90S TRIVIA TO FOLLOW**





# SPN LADIES' COOPERATIVE



## VOLUNTEER INCENTIVES

### **\$2500 TUITION RAFFLE**

TWO SEPARATE WINNERS  
15 HOURS REQUIRED FOR ENTRY  
MUST BE AN ACTIVE COOPERATIVE MEMBER  
DRAWING IS HELD AT LAST MEETING

### **OVER & ABOVE VOLUNTEER RAFFLE**

**\$100 BRONZE RAFFLE**  
16-20 HOURS VOLUNTEERED

**\$200 SILVER RAFFLE**  
21-25 HOURS VOLUNTEERED

**\$300 GOLD RAFFLE**  
26+ HOURS VOLUNTEERED

#### EXAMPLE VOLUNTEER OPPORTUNITIES:

ATTEND A BUSINESS MEETING = 2 HRS

SERVE AS A ROOM CAPTAIN = 5 HRS

SERVE AS AN EVENT COMMITTEE HEAD = 10 HRS

\*\* MANY MORE HOURS AVAILABLE AT COOPERATIVE FUNDRAISERS AND EVENTS

**NEXT BUSINESS MEETING:**

**NOVEMBER 11<sup>TH</sup> 2025**

**MEMBERSHIP DUES: \$60**



[Click here for Membership](#)

ST. PHILIP NERI  
LADIES' COOPERATIVE CLUB  
PRESENTS:



# MERRY & MINGLE

SPN'S CRAFT FAIR

15 NOVEMBER 2025  
10AM-3PM  
SPN PARISHONER'S CENTER  
6600 KAWANEE AVE.

ENJOY HANDMADE CRAFTS,  
FESTIVE FOOD, AND A WHOLE  
LOT OF HOLIDAY CHEER. DON'T  
MISS OUT—BRING A FRIEND AND  
GET INTO THE HOLIDAY SPIRIT!



# SPN Ladies' Cooperative Year at a Glance

## Upcoming Volunteer Opportunities:

10/17 Trunk or Treat Set Up/ Concessions  
11/11 2nd Ladies' Co-op Meeting  
Set Up/ Break Down  
11/15 Merry & Mingle Set Up/ Break Down  
11/29 Buddy The Elf Event

### November:

11/11 2nd Ladies'  
Co-op Meeting  
11/15 Merry & Mingle  
11/20 Airline Skate  
11/29 Buddy The Elf

### December:

12/12  
Ladies' Cooperative Club  
Luncheon  
  
12/31  
Noon Year's Eve

### 2026:

1/23 Krewe of Vikings Game Night  
2/10 Ladies' Cooperative Member Meeting  
3/6 City Park Night  
3/21 Social & Auction  
4/14 Ladies' Cooperative Member Meeting  
5/21 SPN Night at GameON

**MEN'S CLUB MANOR**

**ST. PHILIP NERI**  
**MEN'S CLUB**



## **NEXT MEETING**

**THURSDAY NOVEMBER, 6TH**

**DOORS OPEN AT 6:30 PM**

**COMEDY NIGHT FEATURING:  
JAMES CUSIMANO & JD SLEDGE**

## **UPCOMING**

**TROY "DADDIO" DROUANT LEGACY GOLF CLASSIC**

**MONDAY, NOVEMBER 24TH**

**CHATEAU CC**

**GRANDPARENTS CLUB COTTAGE**

# HALLOWEEN BAKE SALE



PreK-4 may have 1 treat  
Grades K-7 may have 2 treats  
Treats are 50 cents each

**FRIDAY, OCTOBER 24, 2025**

Presented by  
**ST. PHILIP NERI GRANDPARENT'S CLUB**

## SCOUTING SHED

# Cub Scout Pack 377

St. Philip Neri - Metairie, La - [spnpack377@gmail.com](mailto:spnpack377@gmail.com)

## Upcoming Events:

9/27 - Zoofari @ Audubon Zoo

10/1 - Pack Meeting - Camping Skills

10/17-19 - Cub Scout Fall Encampment at Camp V-Bar in Vicksburg, Ms.



It's not too late to join us for another FUN Cub Scout year!

Visit [beascout.org](http://beascout.org) to begin a lifetime of character building, citizenship training, personal fitness, and adventure!

E-mail us at [SPNPACK377@gmail.com](mailto:SPNPACK377@gmail.com) for more information.

We can't wait to have you join our Pack!

# #ADVENTUREON!



## PARISH PAVILION



### FAMILY MASS- LAST SUNDAY OF EACH MONTH

The 9AM Parish Mass on the last Sunday of each month is "Family Mass". Please join the SPN community for these special Masses and enjoy coffee and donuts afterward!

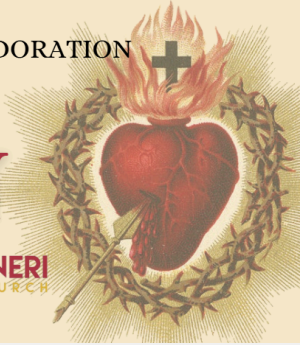
# FIRST FRIDAY DEVOTION

TO THE SACRED HEART OF JESUS

6:15AM - MASS  
7AM - 8:45AM - ADORATION  
9AM - MASS

FIRST  
FRIDAY  
OF THE MONTH

 ST. PHILIP NERI  
CATHOLIC CHURCH



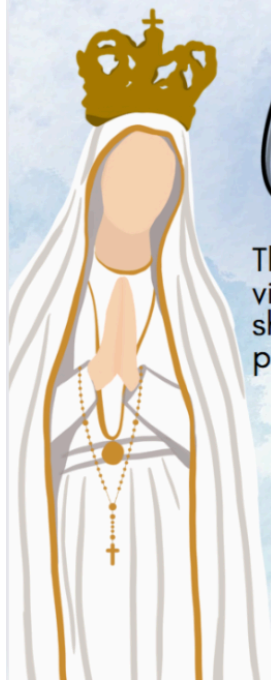
# FIRST SATURDAY DEVOTION

TO THE IMMACULATE HEART OF MARY

*1st Saturday  
of the month*

8-8:45AM - Confessions  
8:30AM - Rosary  
9:00AM - Mass

 ST. PHILIP NERI  
CATHOLIC CHURCH



## *Our Lady of Fatima* HOME VISITS

The statue of Our Lady of Fatima has started her journey of visiting the homes of our St. Philip Neri Families! Each weekend she will be given to a new family & stay for one week as they pray the Rosary together for peace & other special intentions.

WOULD YOUR FAMILY LIKE TO  
WELCOME OUR LADY IN YOUR HOME?



*Scan for more info or go to*  
SPNPARISH.NET/FATIMA

# Never Miss Our Bulletin!




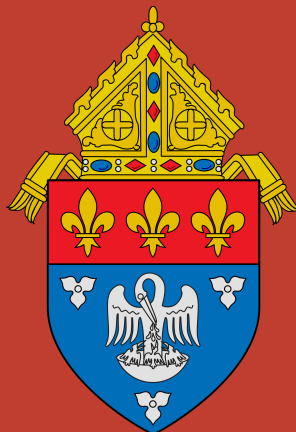
Have it emailed to you automatically every week.

1

Go to [ParishesOnline.com](https://ParishesOnline.com) and enter our parish in the search.

2

Click the  **Subscribe** button on our parish page.



[Unsubscribe](#) | [Update Profile](#) | [Constant Contact Data Notice](#)



Try email marketing for free today!